



# CLAVERACK RURAL ELECTRIC COOPERATIVE, INC.

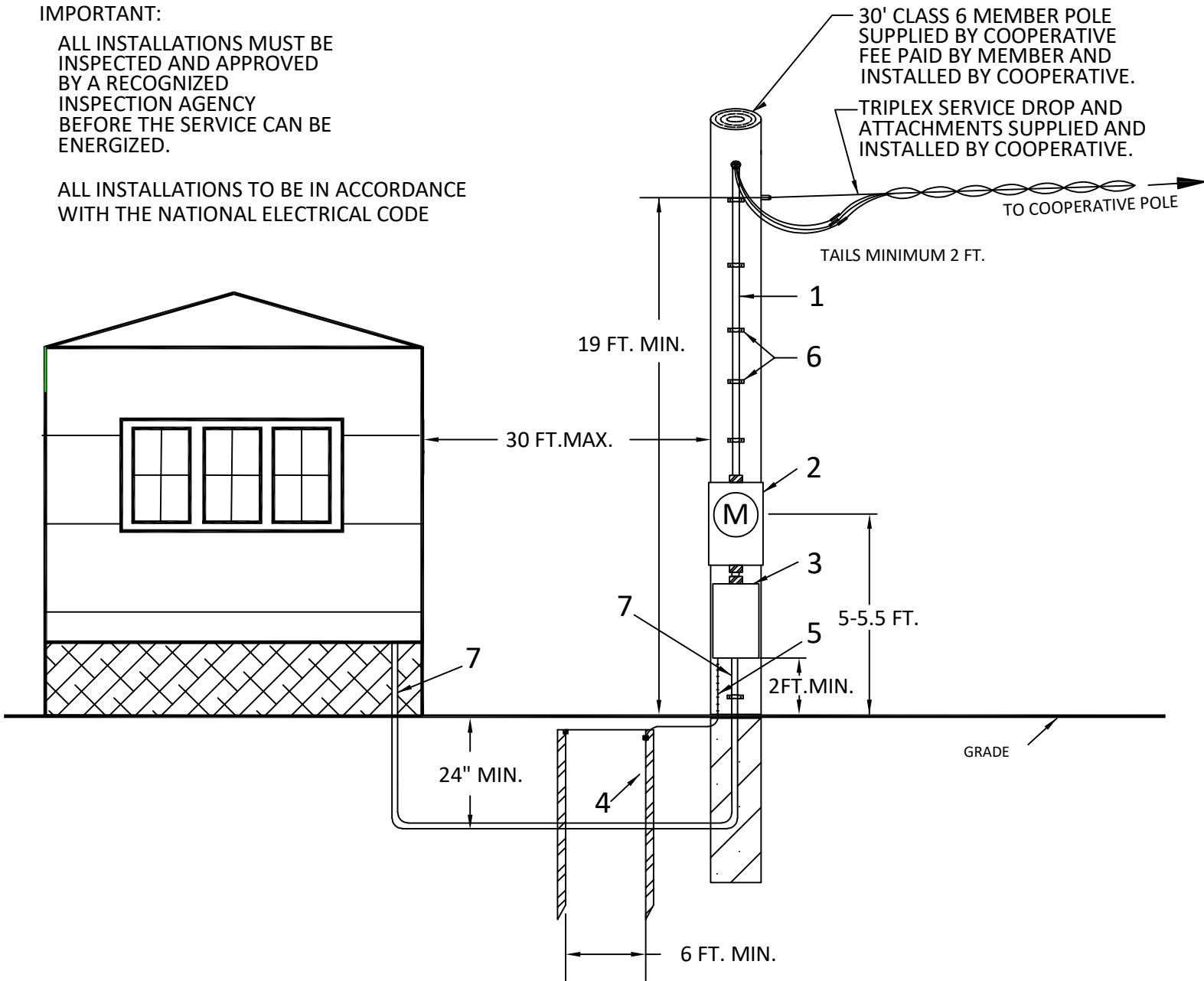
32750 ROUTE 6  
WYSOX, PENNSYLVANIA 18854  
www.claverack.com --- 1-800-326-9799

## INSTALLATION REQUIREMENTS OF POLE MOUNTED SERVICES FOR MOBILE HOMES AND SIMILAR APPLICATIONS.

### IMPORTANT:

ALL INSTALLATIONS MUST BE INSPECTED AND APPROVED BY A RECOGNIZED INSPECTION AGENCY BEFORE THE SERVICE CAN BE ENERGIZED.

ALL INSTALLATIONS TO BE IN ACCORDANCE WITH THE NATIONAL ELECTRICAL CODE



### FURNISHED AND INSTALLED BY MEMBER

- 1 ENTRANCE CABLE OR SERVICE ENTRANCE CONDUCTORS IN APPROVED CONDUIT WITH WEATHERHEAD  
100 AMP - # 2 ALUMINIUM OR # 4 COPPER  
200 AMP - 4/0 ALUMINIUM OR 2/0 COPPER
- 2 MEMBER OWNED 4 JAW UL APPROVED RIGNLESS TYPE METERBASE WITH WEATHER TIGHT HUBS AND BY-PASS HORNS.
- 3 MEMBER OWNED SERVICE EQUIPMENT - MINIMUM 100 AMP WITH 6 BREAKER SPACES MINIMUM. NEMA 3R OUTDOOR TYPE.
- 4 TWO (2) 5/8 IN. X 8 FT. COPPERWELD OR GALVANIZED GROUND ROD.  
GROUND WIRE # 6 BARE COPPER FOR 100 AMP INSTALLATION AND # 4 BARE COPPER FOR A 200 AMP INSTALLATION.  
WHERE AVAILABLE , SERVICE SHOULD ALSO BE GROUNDED TO WELL CASING OR UNDERGROUND METALLIC WATER PIPING SYSTEM.  
GAS OR FUEL OIL PIPING SHALL NOT BE USED AS A GROUNDING ELECTRODE. BONDING: SEE N.E.C. ARTICLE 250
- 5 CABLE STRAPS TO BE PLACED ONE (1) FT. FROM WEATHERHEAD AND METERBASE AND AT TWO (2) FT. INTERVALS.
- 6 CONDUIT WITH 4 WIRE CABLE.