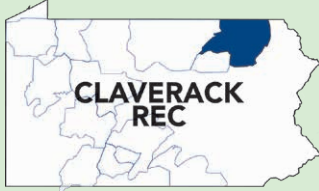


Claverack Rural Electric Cooperative

A Touchstone Energy® Cooperative 



One of 14 electric cooperatives serving Pennsylvania and New Jersey

CLAVERACK REC

32750 Route 6
Wysox, PA 18854
570-265-2167
1-800-326-9799

Email: mail@claverack.com
Website: <https://www.claverack.com>

BOARD OF DIRECTORS

Dr. Robert R. Faux, Zone 2

Chairman

570-574-3531

Angela S. Joines, Zone 3

Vice Chairman

570-756-4979

Danise C. Fairchild, Zone 1

Secretary/Treasurer

570-265-3599

Timothy T. Tewksbury, Zone 6

Vice Secretary/Treasurer

570-833-2320

Charles R. Bullock, Zone 7

570-280-8470

Robert W. Fearnley, Zone 5

570-278-2288

Gary L. Hennip, Zone 4

570-250-2200

Charles R. McNamara, Zone 8

570-553-4385

Anthony J. Ventello, Zone 9

607-765-2615

Steve Allabaugh

President & CEO

STAFF

Annette Koder, *Executive Assistant*

Nick Berger, *Sr. Director,*

Engineering and Operations

Jennifer Jones, *Chief Financial Officer*

Brian Zeidner, *Director, Member Services*

OFFICE HOURS

Monday through Friday
7:30 a.m. - 4 p.m.

Jeff Fetzer, *Local Pages Editor*

Revolution is on the Way



ACCESS TO HIGH-SPEED INTERNET IS a necessity today for most Americans, and the need for fast, reliable internet is only going to increase — especially in rural areas.

That's why Claverack's Revolution Broadband is excited to be moving full steam ahead with the construction of our 1,200-mile fiber-optic network, which will deliver high-speed internet service to many areas of the cooperative's service territory lacking quality internet options.

Since construction began last July, we have completed roughly 150 miles of mainline fiber in areas served by the co-op's Lime Hill and Herrick substations in Bradford County. We expect to finish our fiber build-out in those substation areas by the summer, at which point construction crews will move to the Litchfield Substation area to start building the fiber network there.

I am especially pleased to report we expect to begin connecting customers to our Revolution internet service in the Lime Hill Substation area later this month — and we will be working nonstop to build fiber and hook up Revolution Broadband customers until the federally funded phase of the fiber project is finished in five to six years. After that, our goal is to expand our fiber broadband offerings to unserved and under-served areas of our service territory.

Why is providing reliable, high-speed internet to people in rural communities so important to us? Because your cooperative knows the positive impact broadband access has on residents, businesses and the community's overall economic stability, which was similar to the mission of rural electric cooperatives in the 1930s that continues today.

Access to reliable, high-speed internet enables citizens to work from home, which provides greater job opportunities. It allows us to power smart-home devices, so customers can stay safe and comfortable while they are there and stay connected to their homes when they are away. Connectivity also keeps us informed and entertained with a multitude of online and streaming services. A high bandwidth connection allows us to see a medical professional without leaving home, obtain a higher education degree through online courses, and feel less isolated by connecting with family and friends via social media and video chats.

A community powered by a fiber-optic broadband network is better able to retain businesses and attract new ones, provide businesses with an opportunity to compete in the global economy, open doors for remote job applicants, increase home values, and allow farmers to remotely manage and monitor equipment and herds.

With economic challenges facing many rural communities, Claverack and Revolution Broadband want to be part of the solution by providing reliable, high-speed internet to help close the digital divide. We are well on our way to achieving that. 📶

KYLE LANE

DIRECTOR OF BROADBAND OPERATIONS

Official Notice of Director Elections

Candidates Sought For Zones 1, 2 and 3

ELECTION BY MAJORITY IS ONE of the hallmarks of membership in a rural electric cooperative.

As a member, you can take an active role in democracy at Claverack Rural Electric Cooperative by running for a seat on the co-op's board of directors. Or, you can exercise your democratic rights by simply voting in the director elections.

This year, Claverack will hold director elections for Zones 1, 2 and 3, currently served by directors Danise Fairchild, Robert Faux and Angela Joines, respectively.

Duties of a director

Directors are responsible for developing co-op policies and long-range plans. They voice members' concerns and make recommendations to Claverack's management staff.

Nine directors comprise Claverack's board. Each board member represents a specific area within the utility's service territory.

Co-op Offers Scholarship to MU Students

APPLICATIONS ARE BEING ACCEPTED FOR a \$1,000 scholarship, available for the 2023-2024 academic year, that is being awarded to Mansfield University students who are Claverack members or dependents of members.

To be eligible for consideration, students must:

- ▶ be enrolled full time at Mansfield University
- ▶ demonstrate financial need
- ▶ be a member or dependent of a member of Claverack Rural Electric Cooperative
- ▶ demonstrate the highest traits of leadership, citizenship and character

Students can apply online by visiting our homepage, claverack.com, and clicking on "Scholarships" under the "Your Community" drop-down menu at the top of the screen.

Claverack endowed the scholarship fund at Mansfield University in 2000, with a goal of providing financial assistance to any Claverack member or dependent pursuing a degree at the university.

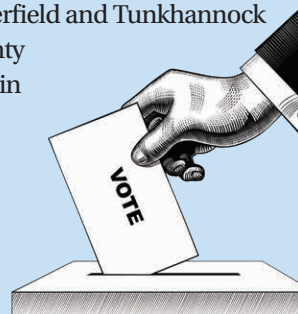
A member of the State System of Higher Education, Mansfield University attracts many students from throughout the cooperative's service territory. 🗺️

Areas Scheduled to Elect Directors in 2023

Zone 1: Albany, Asylum, Herrick, Standing Stone, Stevens, Terry and Wyalusing townships in Bradford County

Zone 2: Exeter and Franklin townships in Luzerne County; and Clinton, Eaton, Exeter, Lemon, Monroe, North Moreland, Noxen, Overfield and Tunkhannock townships in Wyoming County

Zone 3: Benton Township in Lackawanna County; and Clifford, Gibson, Harford, Jackson, Lathrop and Lenox townships and Hop Bottom Borough in Susquehanna County 🗺️



Directors serve three-year terms. Elections take place on a rotating basis, with director seats in three of the co-op's nine zones up for election each year. The board meets at Claverack's headquarters in Wysox on the fourth Wednesday of each month.

To be eligible for director candidacy, you must meet all guidelines listed in the cooperative's bylaws, which may be viewed at claverack.com. A copy of the bylaws can also be obtained by contacting the cooperative or visiting the co-op's Wysox office.

To serve on the board, you must be a member and a bona-fide resident of the zone you seek to represent. You cannot be employed by or financially interested in a competing enterprise or business, or be a close relative of an employee or board member.

Election procedures

Residential members from Zones 1, 2 or 3 interested in running for a position on the cooperative's board of directors must be nominated by a petition signed by at least 15 members who live in the candidate's respective zone. Petitions and further instructions are available by contacting Annette Koder at the Claverack office at 800-326-9799, 570-265-2167 or by email at mail@claverack.com.

Petitions must be received by Tuesday, May 2, 2023, to be considered. The election of directors will be conducted via mail-in ballots; therefore, adequate time is needed for the petitions to be received and reviewed by the cooperative's Credentials and Election Committee.

Qualified candidates will also be asked to submit a brief biography, which will be included with the official ballot and published in *Penn Lines*. 🗺️

Fiber Project Expected to Aid Reliability, Outage Response Efficiency

JEFF FETZER

CLAVERACK'S PROJECT TO DELIVER high-speed internet to parts of its service territory will bring many obvious benefits to those who connect to the Revolution Broadband service: fast, reliable internet service, uninterrupted live streaming, lightning-quick downloading and uploading capabilities, and enough bandwidth to power multiple devices at once.

One benefit that may not be so apparent is how the fiber-optic build-out will help Claverack improve electric service reliability and reduce the scope and duration of power outages.

As part of its high-speed internet project, Claverack has begun constructing a fiber-optic network in areas served by the co-op's Lime Hill and Herrick substations in Bradford County. Over the next five to six years, more than 1,200 miles of fiber-optic lines will be installed across parts of the co-op's service territory in Bradford, Susquehanna and Wyoming counties.

The build-out will allow for the interconnection of fiber-optic lines between Claverack's headquarters building in Wysox and many of the co-op's substations and communications-dependent devices across its electric grid.

The cooperative currently uses cellular service and DSL (digital subscriber line) internet service to communicate between various devices in the field, substations and the co-op office, says Nick Berger, Claverack's director of engineering and operations.

"The cellular and DSL communication we are using now is not as reliable as a fiber connection and is

limited in the amount of data that can be transferred," Berger says. "Fiber is much more reliable, and fiber lines give you a lot more capabilities and flexibility to add different devices and monitoring-type equipment to your various locations."

With fiber communications in place, the cooperative will have improved monitoring capabilities of its load flow, better visibility of its electrical system, and enhanced capabilities for back-feeding and isolating problems on the system during power outages, according to Berger.

"It will help with outage restoration because we will receive notifications quicker, and it will help us pinpoint outage areas," he says. "Once we have connectivity to field devices, we can do switching a lot quicker and, in

some instances, we won't have to deploy a crew out to a physical location to bypass a breaker."

He said having the excellent communication capabilities of a fiber network will allow the cooperative to take advantage of advances in smart-grid technologies, such as the cooperative's advanced metering infrastructure (AMI) system and its supervisory control and data acquisition (SCADA) system. SCADA is a control system architecture made up of computers, networked data communications and graphical user interfaces that allow high-level monitoring of the electric system, as well as remote operation of substations and field devices from a central location.

The cooperative uses its SCADA system primarily to monitor system



REMOTE CONTROL: Claverack REC's technical services supervisor, Larry Beebe, uses a tablet to operate a recloser controller at the Lime Hill Substation. The fiber-optic network Claverack is constructing will give the cooperative improved capabilities for remotely controlling devices in the field from the office.

Continued on page 14D

FIBER PROJECT

Continued from page 14C

voltages and amps and to view event logs.

“With reliable communications through the fiber project, we will have the ability to access devices and change settings to bypass breakers right from the office,” Berger says. “Right now, it’s all mechanical. So for us to do anything to a field device, we have to deploy a crew and physically do that type of operation. Once we have the connectivity out in the field, we won’t always have to deploy a crew, which saves money, is more efficient for our crews and helps with a quicker response.”

He explains that with fiber- and automated-switching equipment in place at co-op substations, when a substation loses power from its trans-

mission supplier, electricity could be automatically backfed, or re-routed, from a different substation with minimal disruption in service to members’ homes and businesses.

“If we have a power supply issue with our transmission supplier, instead of sending trucks out to all field devices to do the switching, a lot of that can be automated,” he says. “So you go from hours of outage time to minutes of outage time, which helps our members in the short term with faster restoration and in the long run by reducing labor costs.”

He noted about one-third of the co-operative’s outage minutes in a typical year are related to power supply or transmission issues, and the automation capabilities that the co-op’s fiber project will enhance should help reduce those supply issue-related outage minutes significantly.

“When there is an actual outage caused by something being broken on our system,” he says, “we will still have to send crews out to fix it. We will never be able to eliminate power outages entirely, but with the addition of fiber and the ability to open and close breakers automatically or remotely, we will be able to determine where a fault is occurring on the system and isolate it to the smallest area possible, which allows more members’ homes to remain energized.”

Berger said the fiber project will also benefit the co-op’s AMI system, which collects data from members’ electric meters and transmits that information to 28 “gateways” along the electric system. The gateways, each of which collects data from several hundred to several thousand meters, provide the Claverack office with real-time information about each



Register for Services!

Lime Hill and Herrick, the wait is almost over. Fiber construction in these substation areas is nearing completion, and high-speed internet services will be available in late March in the Lime Hill area, with Herrick to follow.

Don't miss your chance to be one of the first to receive fast, fiber internet – up to 1 Gig! Our premium managed Wi-Fi service comes standard with all internet packages. And if you sign up now, you'll receive FREE standard installation.

Up next – **Litchfield and Plank Road**. Those in the Litchfield and Plank Road substation areas will see construction activity this summer as we begin attaching fiber-optic cables to our poles. Our plan is to begin offering services in these areas at the end of the year.

Check out the NEW interactive map on Revolution's homepage. Zoom down to street level to verify availability and register your interest.

REVOLUTION
BROADBAND

revolutionbroadband.net
570-268-1349

To register for internet – or to let us know you're interested – go to revolutionbroadband.net/register.

We can't wait for you to see what the area's fastest, most reliable internet can do!

Revolution internet. Made better by being local.

member's electric use and demand, as well as with notifications when power is lost to a meter.

"A lot of those gateways are connected through slow DSL internet or cellular service," he says. "It will be nice to hook them to our fiber to get a really reliable path of communication. It will also save the co-op money because we won't have to pay third parties for all of those internet and cellular connections."

Before crews can begin stringing fiber in an area slated for broadband service, Berger says a pole-by-pole inspection is done to ensure the fiber-optic cable can be safely installed. That process has also helped to strengthen the cooperative's electric system.

"As we evaluate our system for fiber readiness, we have identified a number of clearance issues," he says. "That has resulted in the replacement of older poles with newer, stronger and taller poles. So it has served as a small-scale hardening project for our distribution system, which should result in improved reliability in these areas over time." 📍

Co-op Adds Web Pages Addressing High Bill Concerns, Right-of-Way Program

CLAVERACK HAS ADDED TWO NEW pages to our website that are aimed at addressing high bill concerns and providing details about our right-of-way management program.

The first page, "High Bill Concerns," provides information to help members understand what may cause an electric bill to be higher than expected, as well as resources to help manage energy use.

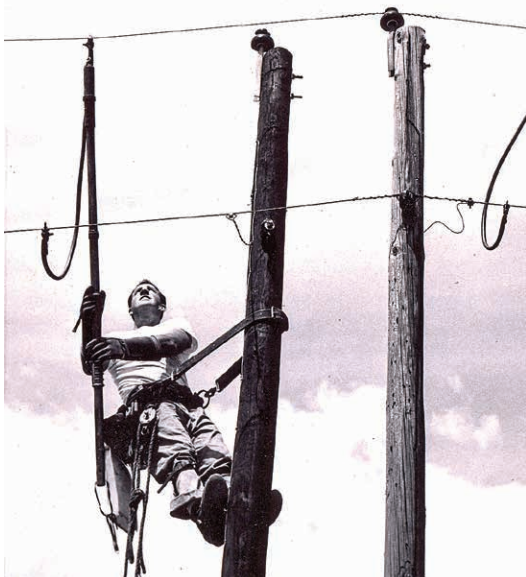
It includes a listing of common sources behind a sudden spike in electric use, as well as tips to reduce energy consumption and lower costs. The page can be found under the "Your Bill" or "Your Questions" drop-down menus at the top of our homepage at claverack.com.

The second page, "Tree Maintenance and Right-of-Way Information," is designed to inform members about the importance of maintaining the safety and reliability of our power lines and equipment through management of our rights of way.

This page, located under the "Your Home" or "Your Questions" drop-down menus on our homepage, provides information on the process for identifying and removing trees that pose a danger to our infrastructure, explains our new Accelerated Ash Removal initiative, and answers some of the common questions we hear from members about our vegetation management program.

Both pages were created with our members in mind, and we encourage you to explore them and take advantage of the information and resources they provide. 📍

Looking Back with Claverack



ALL IN A DAY'S WORK: Franklin "Bud" Passmore, above, a lineman with Claverack's Montrose crew, ties in a new pole to replace a badly rotted pole discovered and reported to the cooperative by a local farmer. In *Claverack Chatter*, where this photo was published in 1953, Passmore was described as "one of the more rugged linemen and the untamed one" of the Montrose crew. *Claverack Chatter* was the cooperative's monthly newsletter to members until *Penn Lines* magazine came into existence in the mid-1960s. Passmore passed away at age 50 in 1973.