



CLAVERACK RURAL ELECTRIC COOPERATIVE, INC.

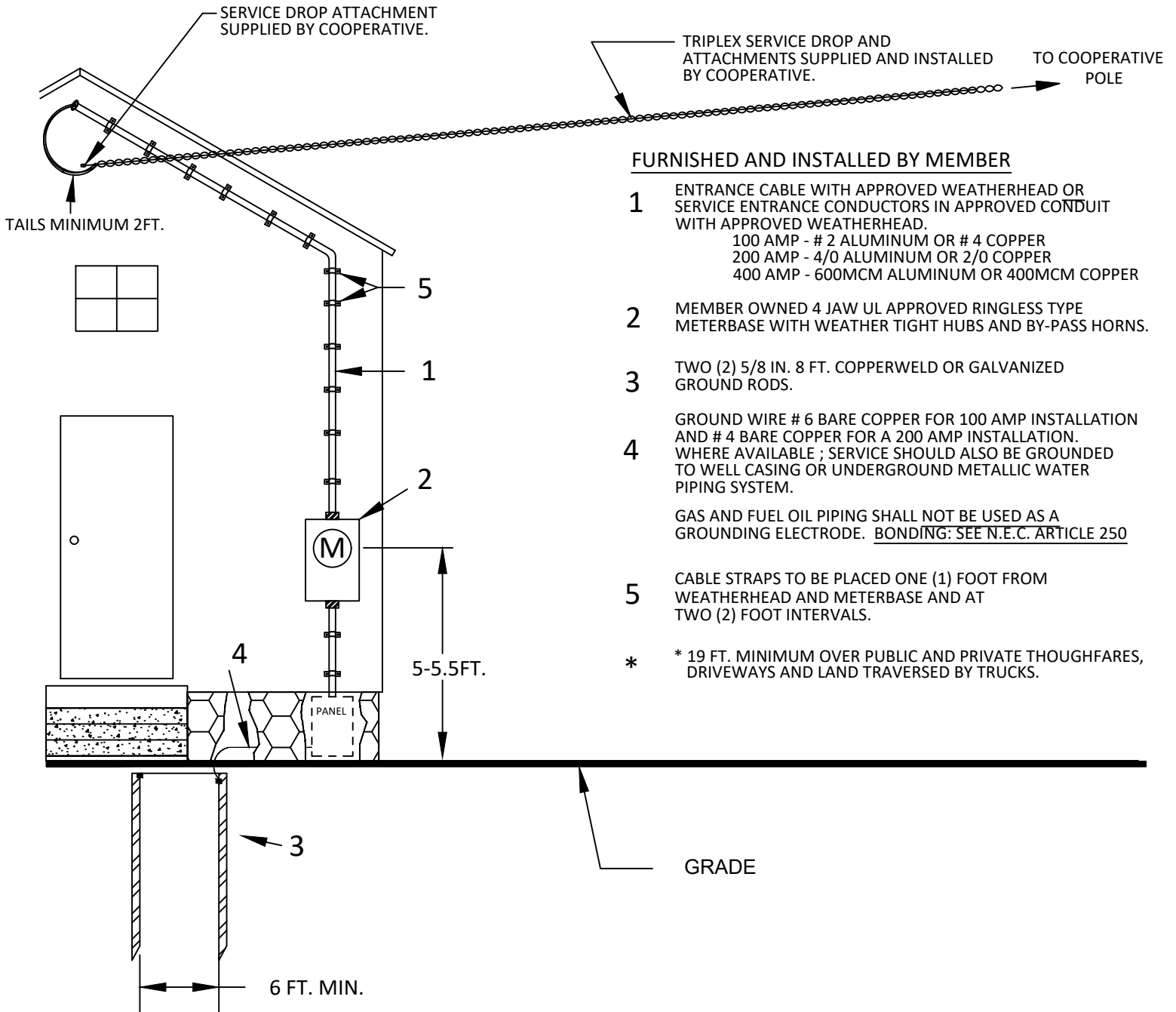
32750 ROUTE 6
WYSOX, PENNSYLVANIA 18854
www.claverack.com --- 1-800-326-9799

INSTALLATION REQUIREMENTS FOR OVERHEAD SERVICE TO A PERMANENT BUILDING

IMPORTANT :

ALL INSTALLATIONS MUST BE INSPECTED AND APPROVED BY A RECOGNIZED INSPECTION AGENCY BEFORE THE SERVICE CAN BE ENERGIZED.

ALL INSTALLATIONS TO BE IN ACCORDANCE WITH THE NATIONAL ELECTRICAL CODE.



FURNISHED AND INSTALLED BY MEMBER

- 1 ENTRANCE CABLE WITH APPROVED WEATHERHEAD OR SERVICE ENTRANCE CONDUCTORS IN APPROVED CONDUIT WITH APPROVED WEATHERHEAD.
100 AMP - # 2 ALUMINUM OR # 4 COPPER
200 AMP - 4/0 ALUMINUM OR 2/0 COPPER
400 AMP - 600MCM ALUMINUM OR 400MCM COPPER
 - 2 MEMBER OWNED 4 JAW UL APPROVED RINGLESS TYPE METERBASE WITH WEATHER TIGHT HUBS AND BY-PASS HORNS.
 - 3 TWO (2) 5/8 IN. 8 FT. COPPERWELD OR GALVANIZED GROUND RODS.

GROUND WIRE # 6 BARE COPPER FOR 100 AMP INSTALLATION AND # 4 BARE COPPER FOR A 200 AMP INSTALLATION. WHERE AVAILABLE ; SERVICE SHOULD ALSO BE GROUNDED TO WELL CASING OR UNDERGROUND METALLIC WATER PIPING SYSTEM.

GAS AND FUEL OIL PIPING SHALL NOT BE USED AS A GROUNDING ELECTRODE. BONDING: SEE N.E.C. ARTICLE 250
 - 5 CABLE STRAPS TO BE PLACED ONE (1) FOOT FROM WEATHERHEAD AND METERBASE AND AT TWO (2) FOOT INTERVALS.
- * 19 FT. MINIMUM OVER PUBLIC AND PRIVATE THOUGHFARES, DRIVEWAYS AND LAND TRAVERSED BY TRUCKS.